



## About KNU

### History

- 1923. Originally established as Daegu School of Medicine and Daegu Teachers' School.
- 1951. Colleges of Education, Medicine, Agriculture, Liberal Arts and Sciences, Law and Political Sciences were combined to create Kyungpook National University.
- 1953. First Graduate School was established.
- 2013. KNU is comprised of 20 Colleges and schools, 14 graduate schools

### Location

- KNU is located in the city of Daegu, the third largest city in South Korea with a population of approximately 2.5 million.
- Less than 2 hours from Seoul by express train, Daegu combines the best of modern and traditional Korea, being surrounded by major industries, such as Samsung and LG, and UNESCO world heritage sites of Gyeongju and Haensinsa temple.
- Three presidents of Korea were born in this region, one of them is a KNU graduate.

### Size & Scope

- 41,934 students in total
- 7,701 graduate students
- 1,157 full-time faculty members
- 4 campuses(3 in Daegu, 1 in Sangju)
- 20 colleges and schools
- 34,233 undergraduate students
- 1,348 international students
- 702 administrative staff
- 14 graduate schools
- 100 research centers

### Specialized Departments

- **Electronics Engineering : Semiconductor Device & System**
  - Fostering customized business & a practically trained, talented workforce as the central school of Industrial-Educational Cooperation
  - Fostering talented individuals & a global research group that transcend regional limitations.
  - Reestablishing the status as base school & university for specialization of new IT convergence area
- **Electronics Engineering : Mobile Communication & Networks**
  - Fostering talented, highly achieved graduates who will become future leaders in the Smart Mobile Industry.
  - Fostering a talented workforce of IT convergence experts through the development of creative education program.
- **Chemistry : Convergence Chemistry**
  - Researching the most important renewable energy sources for sustainable growth in the 21st century
  - Chemical technology development of clean nanomaterials for the implementation of renewable energy
  - Convergence research of clean technology, material technology and energy technology
- **Food Science and Technology: Food Science**
  - Supporting funds for specialization: two hundred million won (US\$ 187,420) every year for four years
  - Specialization of Functional Food Biotechnology
  - Fostering global Food Engineers who will contribute to the development of the Food Industry, New Growth Engines Industry, and lead the globalization of Korean food technology
- **Mechanical Engineering: Robotics & Automation**
  - The robotics and automation area of mechanical engineering combines advanced areas, including but not limited to information, semiconductors, artificial intelligence, bio-mechanics, advanced materials, and microelectromechanical systems (MEMS), with more traditional mechanical and electrical engineering to create a high-value-added converging technology that will play a crucial role for the economic growth of the country in the 21st century
- **Business Administration : AACSB-accredited Education**
  - Meeting the 21 standards that schools of Business Administration should adhere to (including teaching staff, student support, curriculum, facilities, research achievement etc.)
  - Less than 5 percent of business administration programs all over the world are awarded AACSB accreditation

## Affordable Costs

- US\$4,000-8,000 graduate tuition(per year)
- US\$3,400-4,800 undergraduate tuition(per year)
- US\$3,000 on-campus room & board(per academic year)
- 80% of international graduate students receive scholarships
- 40% of international undergraduate students receive scholarships

 **KNU** KYUNGPOOK NATIONAL UNIVERSITY [www.knu.ac.kr](http://www.knu.ac.kr)

Address. Kyungpook National University, Office of International Affairs, 80 Daehak-ro, Bukgu, Daegu 702-701, Korea

P. +82-53-950-6092 F. +82-53-950-6093

<http://www.knu.ac.kr>

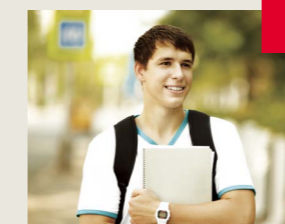
<http://en.knu.ac.kr>



# KYUNGPOOK NATIONAL UNIVERSITY

## Korean Government Scholarship Program (Graduate Program)

Supported by National Institute for International Education  
<http://www.niied.go.kr>



## Korean Government Scholarship Program (Graduate Program)



### Purpose

- To provide international students with an opportunity to conduct advanced studies at higher educational institutions in Korea,
- To develop global leaders and strengthen Korea-friendly networks worldwide.

### Qualifications

Scholarship Period	Requirements
Master's course	1 year of Korean language + 2 years of Master's course requirements
Doctoral course	1 year of Korean language + 3 years of Doctoral course requirements

- The applicant and his/her parents must hold foreign citizenships.
  - Applicants who hold Korean citizenship are not permitted to apply for this program.
- Applicants must be under 40 years of age as of Sep. 1st, 2013 (born after Sep. 1st, 1973).
- Applicants must hold a Bachelor's or Master's degree as of September 1st of the selection year.
  - Applicants who have enrolled in or graduated from a university in Korea are not eligible for the KGSP program. Specifically, applicants who have previously enrolled in or graduated from an undergraduate program, a master's program, or a doctoral program in Korea cannot apply for this program.
- Applicants must maintain a grade point average (GPA) of at least 2.64 on a 4.0 scale, 2.80 on a 4.3 scale, 2.91 on a 4.5 scale, or grades/marks/score of 80% or higher from the previously attended institution. If the applicant does not satisfy the above GPA requirements, he/she will be ineligible to apply to this program.

### Selection Procedure

**1st Selection :** The 1st selection institutions (Overseas Korean embassies or Domestic designated universities) will draft a selection standard based on the criteria provisioned by NIIED, and will recommend qualified applicants according to its respective standards.

**2nd Selection :** The NIIED selection committee will select the most successful candidates from the pool of applicants recommended by the 1st selection institutions.

**3rd Selection :** Only candidates who were recommended by a Korean embassy and have passed the 2nd selection successfully will be evaluated for admission. Successful candidates will gain admission from at least one of the three universities.



# Korean Government Scholarship Program

## Scholarship

Airfare	Round-trip economy class ticket
Monthly Allowance	900,000 won (KRW) per month
Research Allowance Per Semester	210,000 won for scholars in the field of humanities and social sciences; 240,000 won for scholars in natural and mechanic sciences
Relocation (Settlement) Allowance	200,000 won upon arrival
Language Training Fee	Full coverage
Tuitions	All admission fees are waived by the host institution (university). The tuition will be provided for by NIIED.
Dissertation Printing Costs	500,000 ~ 800,000 won, depending on actual costs.
Medical Insurance	20,000 won per month will be provided (limited coverage).
Special funding for scholars who are proficient in the Korean language (TOPIK Level 5 or 6)	100,000 won per month

## Required Documentations

- Required documents : One Original of documents and 3 extra copies
- Documents not in English or Korean must be accompanied by a complete and accurate English or Korean translation certified by the issuing institution.

Application Documents	Master	Doctor
Personal data	○	○
Self Introduction	○	○
Study Plan	○	○
Letter of Recommendation	○	○
Pledge	○	○
Personal Medical Assessment	○	○
Copies of diploma(s) from previously attended undergraduate institution(s)	○	○
Official transcript of previously attended undergraduate institution(s)	○	○
Copies of diploma(s) from previously attended graduate institution(s)	—	○
Official transcript of previously attended graduate institution(s)	—	○
Copy of passport	○	○
Certificate of Korean Language(original copy of TOPIK)	△	△
Certificate of English(original copy of TOEFL, TOEIC, IELTS)	△	△
Published papers, if available(one or two)	△	△
Awards, if available(one or two)	△	△
Certificate of citizenship of His/Her Parents : birth certificate, passport, etc.(only for overseas Koreans)	△	△
Adoption Documents(only for overseas Korean adoptee)	△	△

△ marks : If available



## Important Notes

- Screening is based on the applicant's GPA in previous degree program, personal statement, plan of study, language proficiency(Korean and English) and papers by the relevant department.
- Applicants who have the Korean language certificate of TOPIK, KLPT or English certificate of TOEIC, TOEFL, IELTS will get advantage.
- Dual recommendation by more than one organization is not acceptable.
- Submitted documents will not be returned to the candidates.
- Incomplete or incorrect documents are subject to rejection by NIIED. (Even after entry to Korea)
- In case of submitting copied documents inevitably, applicants must compare the copy to the original of recommendation institute.
- Applicants must accurately fill out the personal medical assessment based on truth. All successful applicants must take a medical exam in Korea. If the results show that the applicant is unfit to be a KGSP student, can be cancelled of KGSP selection.
- No student is allowed to transfer schools during the entire period of the program once he/she enters the school.

## Dormitory

- Fee : Approximately 300,000 Won/Month
- All successful applicants will be given a chance to live in the dormitory.
- Facilities
  - Room type : 2-bed room, 3-bed room
  - Serving 3 meals a day
  - Website : dorm.knu.ac.kr
  - E-mail : housing@knu.ac.kr



## Honors of KNU

- The best national university representing Korea: Ranked among the top 3 Korean national universities
- Ranked as No.1 recipient of funds awarded in the Education Empowerment Project by the Korean Ministry of Education, Science and Technology for 3 consecutive years (2009-2011)
- Selected as one of the world top-500 Universities by Shanghai Jiao Tong University in China (2009)
- Recorded as 2nd in Korea in terms of the total amount paid in scholarships to students (2009)
- Selected as 2nd in Korea in terms of the number of books owned by the University's library (2010)
- Currently holding the largest number of the 5 vice-ministerial level alumni (2010)
- Recorded as having a 100% passing rate of alumni in National Examinations in medicine (2010)
- Selected as best university at site assessment of IT Convergence Global Human Resource Center (2010)
- Top scoring university in the 53rd National Judicial Examination (2011)
- Ranked among top universities in Korea for rate of successful secondary school teacher recruitment examination applicants (2009-2012)
- Ranked top among Korean national universities for graduate employment for 2 consecutive years (2011-2012)
- KNU alumni represent the highest number of LG and Samsung executives (2012)
- Ranked 5th in number of theses per faculty by QS Asian University Ranking Assessment by Chosun Ilbo (2012)
- Ranked top among Korean national universities for patent applications and technology transfer (2012)
- International Accreditation: ABEEK (Engineering) and AACSB (Business)
- Department of Food Science & Nutrition ranked top among related departments at Korean universities (2012 Jungang Ilbo University Ranking)
- Department of Physics confirmed as the top ranking department in production of SCI standard articles in Korea (2012)

## Academic Programs (Graduate)

Division	Department	Field of Study	
		Master's	Doctoral
Humanities / Social Sciences	Korean Language & Literature	Korean Language & Literature	Korean Language & Literature
	English Language & Literature	English Language & Literature	English Language & Literature
	History	History	History
	Philosophy	Philosophy	Philosophy
	French Language & Literature	French Language & Literature	French Language & Literature
	German Language & Literature	German Language & Literature	German Language & Literature
	Chinese Language & Literature	Chinese Language & Literature	Chinese Language & Literature
	Archaeology & Anthropology	Archaeology & Anthropology	Archaeology & Anthropology
	Japanese Language & Literature	Japanese Language & Literature	Japanese Language & Literature
	Korean Literature in Classical Chinese	Korean Literature in Classical Chinese	Korean Literature in Classical Chinese
	Russian Language & Literature	Russian Language & Literature	Russian Language & Literature
	Political Science	Political Science	Political Science
	Sociology	Sociology	Sociology
	Geography	Geography	Geography
	Psychology	Psychology	Psychology
	Library & Information Science	Library & Information Science	Library & Information Science
	Social Welfare	Social Welfare	Social Welfare
	Mass Communication	Mass Communication	Mass Communication
	Economics	Economics	Economics
	International Trade	International Trade	International Trade
	Business Administration	Business Administration	Business Administration
	Agricultural Economics	Agricultural Economics	Agricultural Economics
	Public Administration	Public Administration	Public Administration
	Law	Law	
Education	Education	Education	
Ethics Education	Ethics Education	Ethics Education	
Korean Language Education		Korean Language Education	
English Language Education		English Language Education	
Social Studies Education		Social Studies Education	
Natural Sciences	Mathematics	Mathematics	Mathematics
	Physics	Physics	Physics
	Chemistry	Chemistry	Chemistry
	Life Science	Life Science	Life Science
	Geology	Geology	Geology
	Statistics	Statistics	Statistics
	Astronomy & Atmospheric Science	Astronomy & Atmospheric Science	Astronomy & Atmospheric Science
	Agronomy	Agronomy	Agronomy
	Applied Biosciences	Agricultural Chemistry	Agricultural Chemistry
		Agricultural Biology	Agricultural Biology
	Food Science & Biotechnology	Food Science & Biotechnology (food biotechnology, food biomaterials)	Food Science & Biotechnology (food biotechnology, food biomaterials)
	Horticulture	Horticulture	Horticulture
	Agricultural Engineering	Agricultural Engineering	Agricultural Engineering
	Bio-industrial Machinery Engineering	Bio-industrial Machinery Engineering	Bio-industrial Machinery Engineering
	Bio-fibers and materials Science	Bio-fibers and materials Science	Bio-fibers and materials Science

Division	Department	Field of Study	
		Master's	Doctoral
Natural Sciences	Forestry	Forestry	Forestry
	Wood Science & Technology	Wood Science & Technology	Wood Science & Technology
	Landscape Architecture	Landscape Architecture	Landscape Architecture
	Child & Family Studies	Child & Family Studies	Child & Family Studies
	Clothing & Textiles	Clothing & Textiles	Clothing & Textiles
	Food Science & Nutrition	Food Science & Nutrition	Food Science & Nutrition
	Nursing	Nursing	Nursing
	Science Education	Science Education	Science Education
	Biomedical Science	Biomedical Science	Biomedical Science
	Dental science	Dental science	Dental science
	Pharmacy	Pharmacy	Pharmacy
	Home Economics Education		Home Economics Education
	Mathematics Education		Mathematics Education
	Public Health		Public Health
Engineering	Electronics Engineering	Electronics Engineering	Electronics Engineering
	Electrical Engineering	Electrical Engineering	Electrical Engineering
	Computer Science and Engineering	Computer Science and Engineering	Computer Science and Engineering
	Mechanical Engineering	Mechanical Engineering	Mechanical Engineering
	Applied Chemistry	Applied Chemistry	Applied Chemistry
	Architecture & Civil Engineering	Architecture & Civil Engineering	Architecture & Civil Engineering
	Chemical Engineering	Chemical Engineering	Chemical Engineering
	Polymer Science & Engineering	Polymer Science & Engineering	Polymer Science & Engineering
	Textile System Engineering	Textile System Engineering	Textile System Engineering
	Environmental Engineering	Environmental Engineering	Environmental Engineering
	Energy Engineering	Energy Engineering	Energy Engineering
		Materials Science & Metallurgical Engineering	Materials Science & Metallurgical Engineering
		Electronic Materials Engineering	Electronic Materials Engineering
		Music	Music
Music&Arts & Physical Education	Korean Classical Music	Korean Classical Music	Korean Classical Music
	Fine Arts	Fine Arts	Fine Arts
	Physical Education	Physical Education	Physical Education
	Visual Communication Design	Visual Communication Design	Visual Communication Design
Medicine	Medicine	Medicine	Medicine
	Veterinary Medicine	Veterinary Medicine	Veterinary Medicine
	Dentistry	Dentistry	Dentistry
Natural Sciences (Sangju Campus)	Ecology Science	Ecology Science	Ecology Science
	Animal BT Science	Animal BT Science	Animal BT Science
	Ecology and Environmental System	Ecology and Environmental System	Ecology and Environmental System
	Food and Food-service Industry	Food and Food-service Industry	
Engineering (Sangju Campus)		Environment Friendly Vehicle Engineering	Environment Friendly Vehicle Engineering
	Automotive Engineering	Intelligent Vehicle Engineering	Intelligent Vehicle Engineering
	Computer Information	Computer Information	
	Constructional Disaster Prevention and Environmental Engineering	Constructional Disaster Prevention and Environmental Engineering	Constructional Disaster Prevention and Environmental Engineering
	Textile & Fashion Design	Textile & Fashion Design	
	Nano & Materials Science and Engineering	Nano & Materials Science and Engineering	
	Electronic Engineering	Electronic Engineering	
	Precision Mechanical Engineering	Precision Mechanical Engineering	
Sports (Sangju Campus)	Leisure Sports	Leisure Sports	Leisure Sports