

## How to apply ?

1. Visit <http://recherche-technologie.wallonie.be/go/beware>, where you will find all information, documents, application forms and contact details of the programme managers.
2. Identify the most suitable host according to your professional expectations: the programme managers will help you in this important step.
3. Define a common research project with the host unit and apply jointly.

Selection process is about 3 months and includes an international peer review. You will receive an Evaluation Summary report together with the outcome of the selection.

## When ?

**BEWARE FELLOWSHIPS Industry:**

2 calls per year, next deadline is **March 31st, 2014**

**BEWARE FELLOWSHIPS Academia:**

1 call per year, next deadline is **April 15th, 2014**

## Get support ?

<http://recherche-technologie.wallonie.be/go/beware>

or contact directly **Didier Flagothier**

[didier.flagothier@spw.wallonie.be](mailto:didier.flagothier@spw.wallonie.be)

+32 81 33 45 27

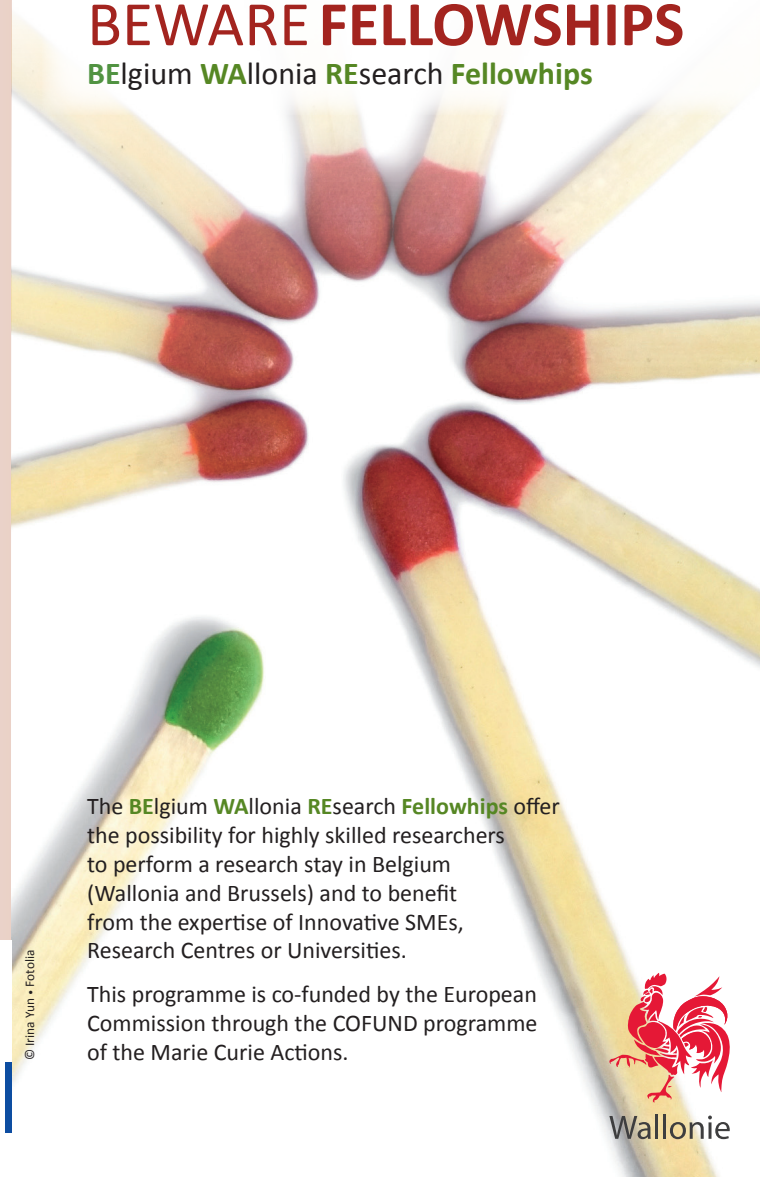
# Innovate...

Go for **Belgium**

in the heart of Europe !

## BEWARE FELLOWSHIPS

BElgium WALLonia REsearch Fellowhips



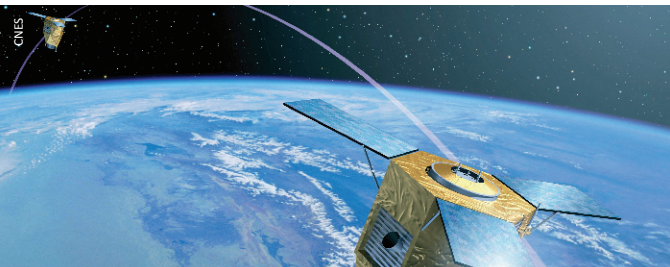
The **BElgium WALLonia REsearch Fellowhips** offer the possibility for highly skilled researchers to perform a research stay in Belgium (Wallonia and Brussels) and to benefit from the expertise of Innovative SMEs, Research Centres or Universities.

This programme is co-funded by the European Commission through the COFUND programme of the Marie Curie Actions.

**Two schemes,**  
according to your expectations...

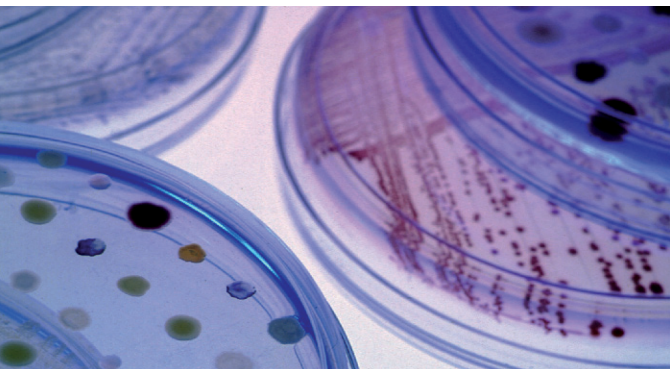
### **BEWARE FELLOWSHIPS *Industry***

Applications are done jointly by the candidate and a SME or an accredited research centre in Wallonia. The research stay may vary from 18 to 36 months and must encourage the innovation process within the Walloon host and allow the researcher to acquire new skills and expertise.



### **BEWARE FELLOWSHIPS *Academia***

Applications are done jointly by the candidate and one of the five French-speaking universities of Belgium, in partnership with a Walloon company. The research stay may vary from 18 to 36 months and focuses on technology transfer.



#### **Who can apply ?**

Researchers from all nationalities, holding a PhD or having equivalent research experience (minimum 4 years). At the closing date of the call for proposals, the researcher may not have more than 10 years' experience from the date of obtaining the diploma giving access to doctoral studies and must be in a situation of transnational mobility (having spent less than 12 months in Belgium during the last 36 months).

#### **Eligible research fields**

All research fields are eligible but the research project must demonstrate an innovative aspect and/or enable technology transfer.

#### **Eligible hosts**

Any SME having a head office in Wallonia, one of the 24 accredited research centres or one of the 5 French-speaking universities. In order to help candidates identify the most suitable host according to their expectations, candidates may contact the programme managers who will offer full support (see website).

#### **What does the fellowship includes ?**

- a gross annual salary, including holiday pay and year-end bonus (+/- 90,000 €);
- the personal liability insurance costs;
- the contributions to the National Office of Social Security (NOSS) : health care, retirement, child allowances, etc;
- a mobility allowance of 450€/month;
- 18,000€/year to cover the expenses linked to the supervision and mentorship of the researcher and other costs such as equipment, travel, consumables,...